

# HD IP Camera

## Quick Operation Guide

### V1.1.1

## WARRANTY CARD

Thanks for purchasing the product. This warranty card is your free warranty voucher.

Lifetime Quality Guarantee  
Warranty Period: One Year

### Warranty Terms:

- The warranty card can be used for the products you purchased from our company.
- In warranty period, any defects that caused by the product itself, please contact our after sales representative
  - Please mail or fax the filled "Warranty Card" to us in time. You can enjoy free maintenance and replacement during warranty period. Otherwise, it will be neglected.
  - We will use your "Warranty Card" information, please fill in detail.
  - The below circumstances is paid warranty:
    - Defects caused by man-made factors, such as operation careless handling or not following instructions. Also to electric shock cases.
    - Defects caused by force majeure such as nature disasters etc.
    - There are no complete product model, no product serial ID, S/N, P/N, or the barcode cannot be recognized.

Product Name: _____	Purchase Date: _____
Product Serial ID: _____	Buyer's Name: _____
Mailing Address: _____	Contact Person: _____
Phone: _____	Zip Code: _____
Agents: _____	Fax: _____
Agents' Phone: _____	Contact Person: _____

## SAFETY INSTRUCTIONS

These instructions are intended to ensure that the user can use the product correctly to avoid danger or property loss.

The precaution measure is divided into 'Warnings' and 'Cautions':

**Warnings:** Serious injury or death may be caused if any of these warnings are neglected.

**Cautions:** Injury or equipment damage may be caused if any of these cautions are neglected.

### Warnings:

- Proper configuration of all passwords and other security settings is the responsibility regulations of the nation and region. Please refer to technical specifications for detailed information.
- In the use of the product, you must be in strict compliance with the electrical safety regulations of the nation and region. Please refer to technical specifications for detailed information.
- Do not connect several devices to one power adapter overload may cause over-heating or a fire hazard.
- Please make sure that plug is firmly connected to the power socket.
- If smoke, odor or noise rise from the device, turn off the power at once and unplug the power cable, and then please contact the service center.

### Preventive and Cautionary Tips

Before connecting and operating your device, please be advised of the following tips:

- Ensure unit installed in a well-ventilated, dust-free environment.
- Unit is designed for indoor use only.
- Keep all liquids away from the device.
- Ensure environmental conditions meet factory specifications.
- Ensure unit is properly secured to a rack or shelf. Major shocks or jolts to the unit as a result of dropping it.
- May cause damage to the sensitive electronics within the unit.
- Use the device in conjunction with an UPS if possible.
- Power down the unit before connecting and disconnecting accessories and peripherals.
- A factory recommended HDD should be used for this device.
- Improper use or replacement of the battery may result in hazard of explosion. Replace with the same or equivalent type only. Dispose of used batteries according to the instructions provided by the battery manufacturer.

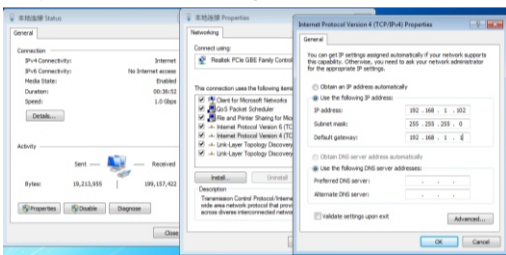
## IPC Quick Operation Guide

### 1. Camera default parameter

The default IP address	192.168.1.123
User name	admin
password	123456

### 2. Configure the network address of the computer

- Turn on the power supply.
- Connect the camera to computer via cable.
- Manually configure the computer's network address, make sure the camera and the computer are in the same IP range.
  - Check the state of the local connection, click the "properties" button.
  - Double click on "The Internet protocol version 4 (TCP/IPV4)" option.
  - Manually configure the IP address and subnet mask, such as 192.168.1.102 and 255.255.255.0, make sure the camera and the computer are in the same IP range.



Picture 2-1

### 3. Video preview and configuration

- Open the Web browser (suggest using IE), enter the IP address of the camera (192.168.1.123 by default).
- According to the system prompted to install video controls, such as the tooltip control is disabled, try in the tools > Internet options > security TAB, add site to the "trusted sites", or change the security level and enable the ActiveX control permissions.
- After installed successful, refresh the page again.



Picture 2-2 Login Page

- In the login page enter your user name and password (the default user name: admin, the default password is: 123456), and then click login, can enter the video preview pre configuration page.

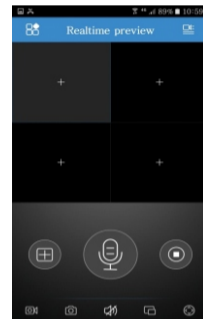


Picture 2-3 Picture Preview

## MOBILE QUICK OPERATION

### Step 1: Mobile APP Installation and Login

In "APP Store" or "Google Play" enter "Smart Viewer", and download to your mobile. After installation, click icon to enter into "Realtime Preview", shown as picture 3-1.



Picture 3-1 Realtime Preview

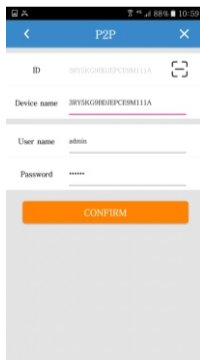
### Step 2: Add IPC

Click icon , then click , it will turn into "Add Equipment" option, shown as picture 3-2.

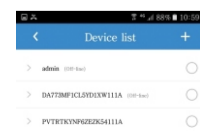


Picture 3-2 Add Equipment

Click "WIFI Search", click ; turn to page "P2P", enter "User name" and "Password", then click confirm. It can be also added by "Scan QR code to add device". Also it can be added by enter "ID", "Device name", "User name" and "Password", then click confirm, shown as picture 3-3. After adding successful, it will pop to picture 3-4.



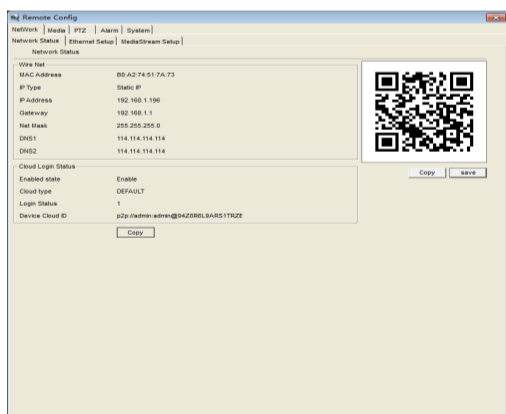
Picture 3-3 Add Equipment



Picture 3-4 Device Add Finish

### ID source

- Login Web, click "Network setting" → "Network Information", then input information after "@" of "Device cloud ID".
- Login Web, click "Configuration" → "Remote Configuration" → "Network setting" → "Network Information", then input information after "@" of "Device cloud ID".
- Scan QR code. QR code will appear in Web or VMS client, click button of "scanning" in the interface of "Adding device".



Picture 3-5 Device ID

START PREVIEW(0)